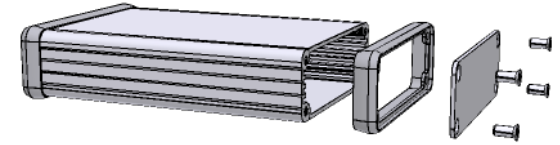
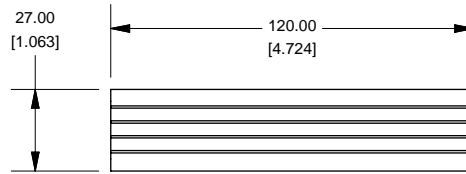
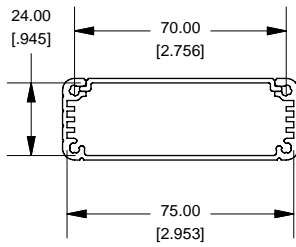
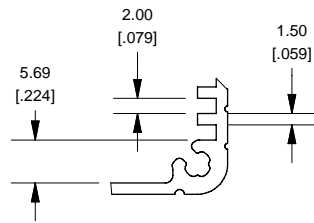


Extrusion

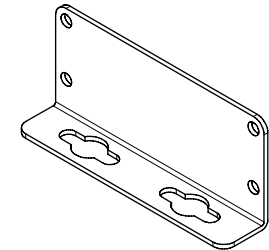
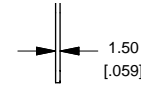
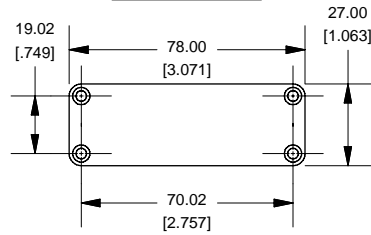


EXTRUSION DESIGNED FOR 75MM WIDE PC BOARD

Slot Details



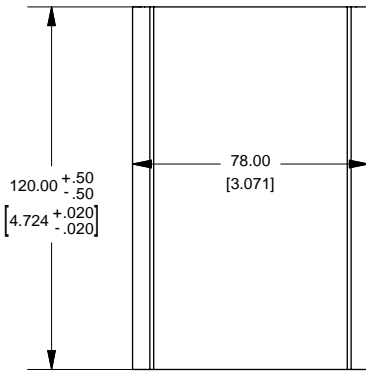
End Plate



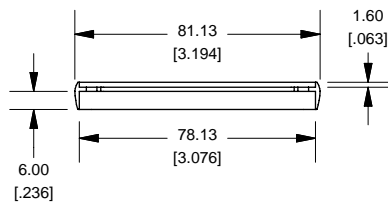
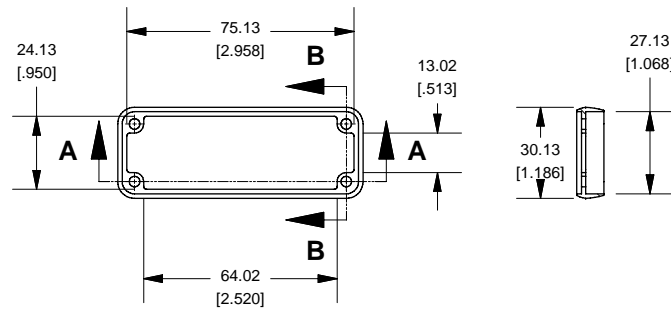
OPTIONAL FLANGE END PANELS 1455JF

NOTE
 Purchased assembly includes box, plastic bezels, end panels, #6 Taptight screws and self adhesive rubber feet.
 Box made from Extruded Aluminum 6063.
 Bezels made with polycarbonate.

| 1455J1201 | |
|------------------------------|-------------|
| PART NUMBERS | |
| Clear Anodized | 1455J1201 |
| Black Anodized | 1455J1201BK |
| ACCESSORIES | |
| See website for accessories. | |



Open Bezel



Enclosures can be Factory Modified (Milling, Drilling, Printing etc.)
 Solid models of this enclosure available in STEP or IGES.
 Contact Factory mjm@hammondmfg.com